

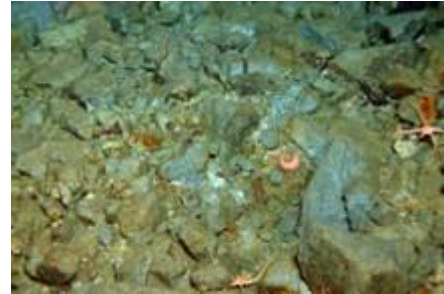


January 18, 2007

Brand new images of the Antarctic sea floor

Explore the completely new videos shot 250 meters below the surface on the Antarctic sea floor at the Web site www.cousteau.org/caml.html!

Thirty years after Captain Jacques Cousteau's first expedition to Antarctica, the Cousteau Society/Equipe Cousteau and Google present images from the latest biological expedition to the southern continent by the Alfred Wegener Institut's icebreaker *Polarstern*. The shots were filmed in a zone whose biology has never before been investigated.



This adventure, which began on November 23, 2006, has brought together nearly fifty scientists from all over the world. It is part of the Census of Antarctic Marine Life, an international network of researchers committed to compiling an inventory of Antarctic biodiversity that is receiving special focus as the International Polar Year 2007-2008 (IPY) approaches. The IPY will begin in March.



These first images were filmed using a camera mounted on a remotely-operated vehicle (ROV) that was lowered as far as 250 meters deep. From a scientific point of view, this method of photographic sampling is crucial. The technology enables the public at large to participate in deeper explorations of the underwater world, so well documented by Captain Cousteau's filmed expeditions, and which is still both fascinating and poorly understood.

Over the next few weeks, researchers will attempt to answer the following questions: Does the repeated scraping of the sea floor by icebergs have a positive effect on biodiversity? Will the effects of climate change deplete marine life? To that end, the expedition is gathering as much data as possible about the deep-sea ecosystem in Antarctica—from recording the physical parameters of the water to studying the large animals like whales to observing invertebrates of all sizes.

[Read previous news releases from the Polarstern](#)

Note: Images copyright by Alfred Wegener Institute.

